

# OPERATOR'S MANUAL

17" HAND PUSH  
5 - 7 - 10 BLADE  
FRONT-THROW  
REEL MOWER



# McLANE

MANUFACTURING  
INC.

7110 East Rosecrans Avenue  
Paramount CA 90723  
(562) 633-8158  
Fax: (562) 602-0651  
[www.mclanemower.com](http://www.mclanemower.com)

# CONTENTS

	Page		Page
<b>Assembly</b>	<b>2</b>	<b>General Safety Suggestions</b>	<b>7</b>
Attaching the Handle		<b>Warranty</b>	<b>7</b>
<b>Mower Features</b>	<b>3</b>		
<b>Operating Your Mower</b>	<b>4</b>		
<b>Maintaining Your Mower</b>	<b>4</b>		
Reel Maintenance			
General Maintenance			
<b>Parts List</b>	<b>5</b>		
<b>Parts Illustration</b>	<b>6</b>		



## CAUTION



This symbol marks important instructions relating to your personal safety. To avoid the possibility of injury, read and follow such instructions carefully.

When the manual refers to the left or right side of the mower, it means your left and right when standing in the operating position.



## CAUTION TO AVOID INJURY



READ OPERATOR'S MANUAL • MAINTAIN SAFETY  
DEVICES • REMOVE POTENTIAL THROWN  
OBJECTS • NEVER MOW NEAR PEOPLE • NEVER  
CARRY PASSENGERS • LOOK BEFORE BACKING  
• AVOID SLIPPERY OR STEEP AREAS • AVOID  
REEL UNLESS REEL IS STOPPED.

# ASSEMBLY

TOOLS REQUIRED: 7/16" Wrench, 5/8" Wrench, 11/16" Wrench or Adjustable Wrench

**NOTE:** Reference to left or right side of mower is from operator's position at the handle, facing forward. The lawn mower is fully assembled except for the handle, handle brace plate and left and right lower handle braces. Everything is packed and shipped in one container, including package of hardware and handle grips.

## ASSEMBLY:

**STEP 1:** Remove handle, 2 lower handle braces, handle brace plate and bag of parts from the mower carton. Now remove mower from carton.

**STEP 2:** Top handle is shipped in two pieces. Inside of hardware baggie, locate the 1/4-28 x 2" hex head bolt and nut. Insert bolt through holes located just under curve of upper handle pieces. Place nut on bolt and tighten to remove any movement of two handle pieces.;

**STEP 3:** Attaching handle braces and handle. The bolts will be attached to the part or in the bag of parts.

**A.** Attach right and left lower handle braces to the mower.

There is a pin welded to the bottom of the handle brace. Place the pin in the slotted hole located in the back of the side plate. Now place a 7/16" x 5/8" bolt through the hole in the handle brace and the top hole of the side plate. Use a 7/16" nut to secure handle brace to the mower.

**B.** Place the upper handle over the handle braces making sure the holes in the upper handle align with the holes in the handle braces.

**C.** Place the handle brace plate between the lower handle braces and bolt all pieces together with 1/4-28 x 7/8" bolts. Place A 1/4" nut on each bolt and tighten securely. (refer to Fig. 1)

**D.** Slip on the handle grips.

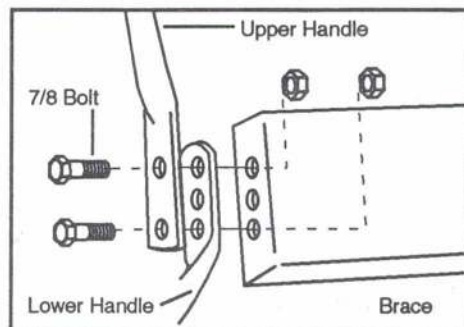


Fig. 1

**NOTE:** The holes in the upper handle must be aligned with the three holes in the lower braces.

## OPERATION

### HEIGHT ADJUSTMENT

The cutting height of the mower is adjustable from 3/16" to 2 1/2" approximately. Fine adjustment is made with the notched bracket. (part #6509) (Fig. 7)

Additional or medium range adjustments are made by changing position of front wheel bar assembly to a different hole. (Fig. 8) This is done by removing tie rod (part #6076). **Note:** position of parts and washers so they will be replaced in the same order.

Exceptionally high cutting may be done by adjusting rear wheels. Adjustment Brackets (part #1545) are adjusted to keep wheel travel to a minimum.

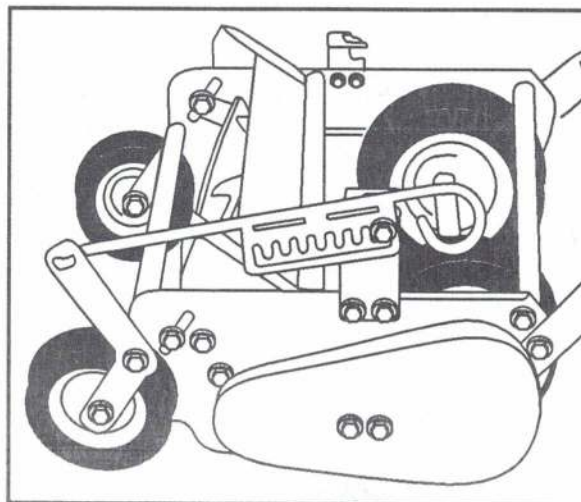


Fig. 7



# FRONT THROW REEL MOWER FEATURES

---

## OTHER FEATURES

Ball Bearing Wheels

Baked Polyester Powder Paint

One side Specifically Designed  
for Close-In Cutting



# OPERATION

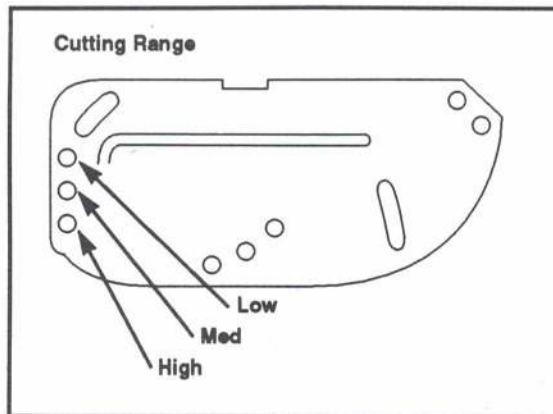


Fig. 8

## REAR WHEEL ADJUSTMENT

1. Remove chain guard by removing two 1/4" bolts holding guard to mower.
2. Remove the chain by disconnecting the master chain link.
3. Remove the 5" rear wheel sprocket. Use a 1/4" allen wrench to loosen the set screw from the sprocket hub. Now pull the sprocket from the rear axle.
4. There are two 5/16" bolts holding the height adjustment brackets to the side plates. (One bracket on each side) Remove the bolts, total of four, two on each side.
5. To raise the back of the mower, move height adjustment brackets down. To lower mower move brackets up. Align holes in bracket with slotted holes in the side plate and replace the 5/16" bolts.
6. Now replace sprocket and chain.

**Note:** To keep mower level the height adjustment brackets must be raised or lowered equally on both sides of the mower. (Use same horizontal slotted holes on both sides).

# MAINTENANCE

## LUBRICATION

Oil front wheel bearings occasionally. Oil chain frequently. Reel bearings are sealed.

## REEL MAINTENANCE

Normally grinding of the reel is not recommended or necessary to insure proper cutting. This is due to the extreme hardness and great strength of the reel.

Sharpening and back lapping, when required should always be done by a properly equipped service center.

## INSTALLING GRASS CATCHER:

1. SEE FIG. 9: Loosen catcher hook, nuts and bolts. Remove front nut and bolt from each catcher hook. Then raise catcher hooks and fasten both hooks with the bolts. Leave bolts loose until catcher is adjusted for proper clearance from the reel blades.
2. Attach grass catcher to the mower and make sure the catcher does not touch the reel blades. The catcher hooks are slotted so you can easily adjust the catcher so it will clear the reel blades.
3. When proper clearance is assured, tighten the nuts and bolts holding the hooks to the catcher.

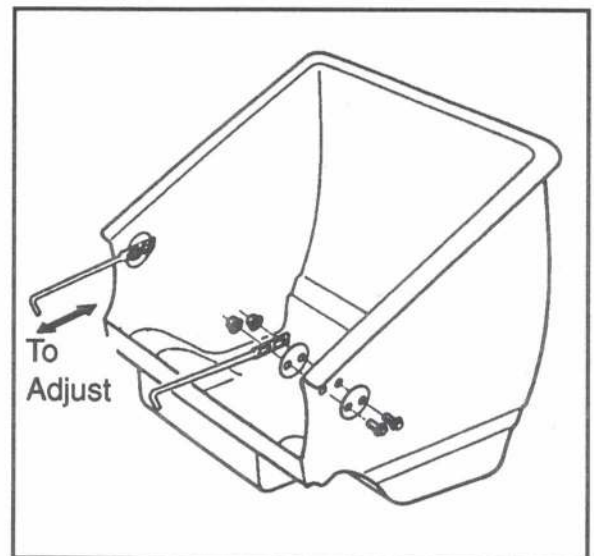


Fig. 9

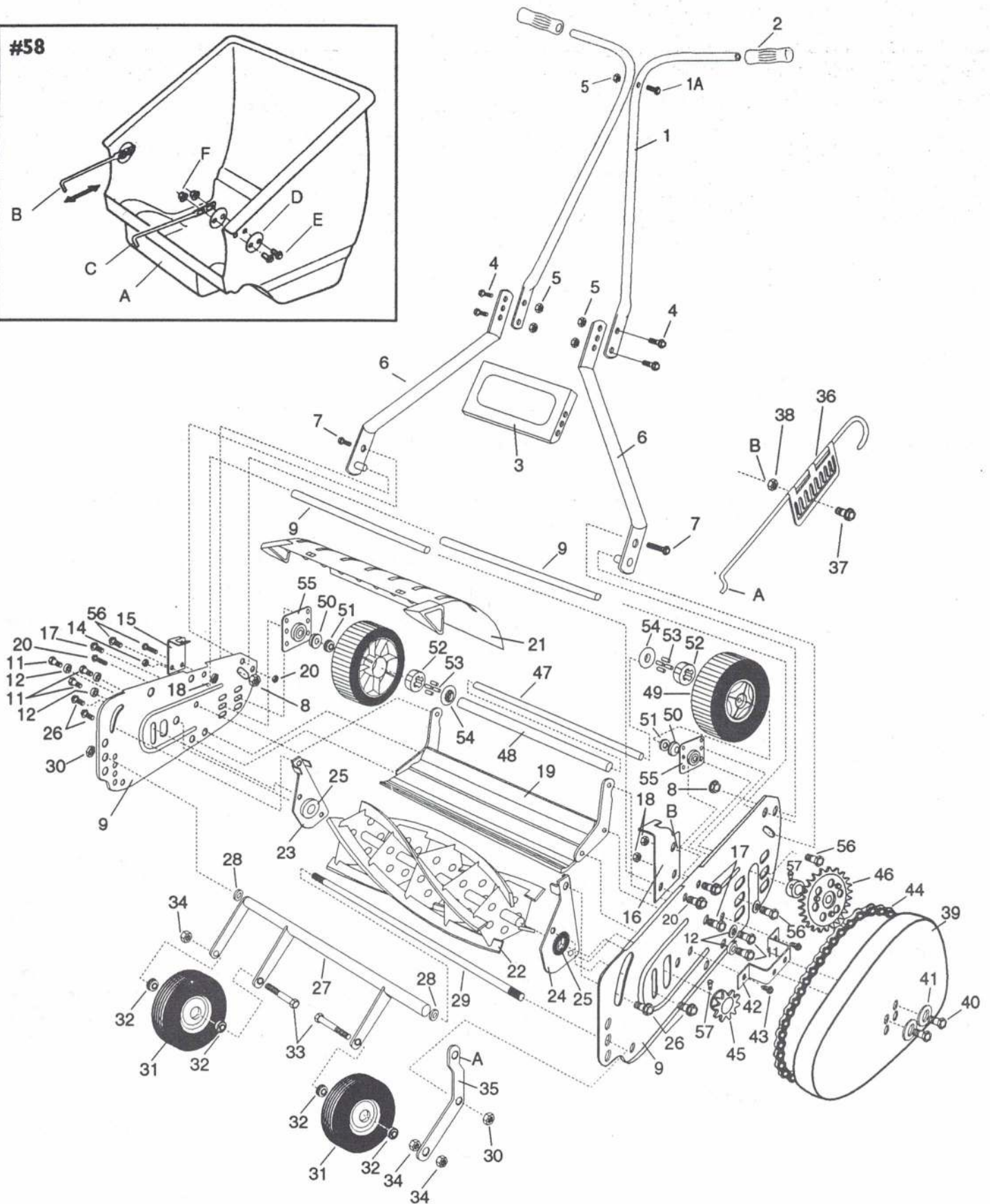
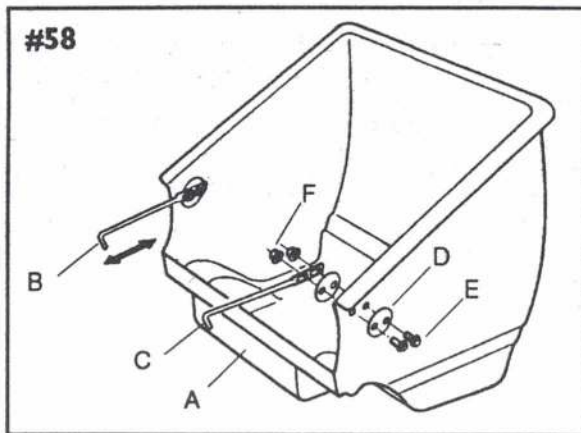
# McLane — HAND PUSH MOWER PARTS LIST

FORM HP  
02/96


REF. NO.	PART NO.	DESCRIPTION	REF. NO.	PART NO.	DESCRIPTION
1	6500	Handle	51	7180	Outside Wheel Bearing
1A	6515	1/4"-28 x 2" Bolt	52	7137-A	Sprag
2	6002	Handle Grips (2)	53	7138	Sprag Roller (4)
3	6007	Handle Brace Plate	54	7140	Dust Cover
4	6012	1/4"-28 x 7/8" Bolt (4)	55	1545	Rear Axle Height Adjustment Brackets (2)
5	6011	1/4"-28 Nut (4)	56	1033	5/16"-18 x 1/2" Bolts For Adj. Brackets (4)
6	6501	Lower Handle Brace (2 Left & Right)	57	1070	7/16"-20 x 7/16" Sprocket Set Screw (2)
7	6502	Handle Brace Bolt 7/16"-14 x 5/8" (2)	58	6083-C	Catcher Complete
8	6008-A	Brace Bolt Jam Nut 7/16" (2)	A -	6083	Catcher Only
9		6503 Frame Assembly (Consists Of L+R Side Plate Welded With Cross Bars)	B -	6084	Right Catcher Hook
11	1105	5/16"-18 x 5/8" Side Plate Tapered Bolt (6)	C -	6085	Left Catcher Hook
12	1106	Bushing For Tapered Bolt (6)	D -	6086	Reinforcement Washer (4)
15	6506	Right Catcher Hook Bracket	E -	6016	1/4"-28 x 5/8" Catcher Hook Bolt (4)
16	6507	Left Catcher Hook Bracket	F -	6011	1/4"-28 Nut for Catcher Hook Bolt (4)
17	6063	5/16"-18 x 3/4" Hook Bracket Bolt (2)			
18	6019-A	5/16"-18 Nut For Bracket Bolt (2)			
19	6508	Bed Knife			
20	1033	5/16"-18 x 1/2" Top Bed Knife Bolt			
21	6053-A	Grass Shield			
22	6066-5	5 Blade Reel			
23	6065	Right Reel Bearing Retainer			
24	6067	Left Reel Bearing Retainer			
25	6064	Reel Bearing (2)			
26	1033	5/16"-18 x 1/2" Bearing Retainer Bolt (4)			
27	6077	Front Wheel Assembly Bar			
28	6075	Washer For Front Wheel Bar			
29	6076	Tie Rod For Front Wheel Bar			
30	6008-A	7/16" Tie Rod Nut (2)			
31	6078	6" Front Wheel W/Bearings (2)			
32	1002	Front Wheel Bearing (4)			
33	6080	7/16"-14 x 2 1/2" Front Assembly Bolts (2)			
34	6008-A	7/16" Nut for 6080 Bolt - (3)			
35	6074	Height Adjustment Wheel Bracket			
36	6509	Height Adjustment Notched Bracket			
37	1074	5/16"-24 x 7/8" Bolt for Notched Bracket			
38	1075	5/16" Nut for 1074 Bolt (2)			
39	6510	Chain Guard			
40	2034	1/4"-20 x 1/2" Chain Guard Bolt (2)			
41	1120	7/16" Washer For Chain Guard			
42	6511	Chain Guard Holding Bracket			
43	2028	#10 x 1/2" Sheet Metal Screw for Above Bracket (2)			
44	6512	#41 Chain			
45	1579	8 Tooth Reel Sprocket			
46	1572	5"-30 Tooth Rear Wheel Sprocket			
47	6513	5/8" x 18 5/8" Rear Axle			
48	6514	Rear Axle Spacer			
49	7135	Rear Wheel Complete W/Tire			
50	1547	Rear Wheel Spacer (3)			



# 17" HAND PUSH FRONT THROW REEL MOWER PARTS ILLUSTRATION



# Safety Rules

 Improper use of the mower can result in injury. To reduce this possibility, give complete and undivided attention to the job at hand, and follow these safety precautions.

---

## TRAINING

1. Read the Operating and Service Maintenance Instruction Manual carefully. Be thoroughly familiar with the proper use of the equipment.
  2. Never allow children to operate the mower.
  3. Keep area of operation clear of all persons, particularly small children and pets.
- 

## PREPARATION

1. Thoroughly inspect the area where the equipment is to be used, and remove all stones, sticks, wire, bones and other foreign objects.
  2. Do not operate equipment when barefoot or wearing open sandals. Always wear substantial foot wear.
  3. Mow only in daylight or in good artificial light.
  4. Never operate equipment in wet grass. Always be sure of your footing. Keep a firm hold on the handle and walk, never run.
- 

## OPERATION

1. Do not put hand or feet near or under rotating parts. Keep clear of discharge opening at all times.
  2. After striking a foreign object, thoroughly inspect the mower for any damage, and repair the damage before operating the mower.
  3. When cleaning, repairing or inspecting, make certain reel and all moving parts have stopped.
  4. Wait until reel comes to a complete stop before removing grass catcher.
  5. Mow across the face of slopes, never up-and-down. Exercise extreme caution when changing direction on slopes. Do not mow excessively steep slopes.
  6. Never operate mower without proper guards, plates or other safety protective devices in place.
- 

## MAINTENANCE

1. Keep all nuts, bolts and screws tight to be sure equipment is in safe working condition.
  2. Check grass catcher frequently for wear or deterioration.
  3. Oil chain occasionally.
  4. **DO NOT MODIFY MOWER.** Unauthorized modification to the mower may impair its function and safety and affect mower life.
- 

## Two Year Limited Warranty

For two years from purchase (60 days for commercial use) McLane Manufacturing Inc., will replace for the original purchaser, free of charge, any part or parts, found upon examination by any factory authorized service center, or by the factory in Paramount, California, to be defective in material or workmanship or both. All transportation charges on parts submitted for replacement under this warranty must be borne by purchaser. There are no other expressed warranties. Implied warranties, including those of merchantability and fitness for a particular purpose, are limited to two years from purchase and to the extent permitted by law. Any and all implied warranties are excluded. This is the exclusive remedy and liability for consequential damages. Any and all warranties are excluded to the extent exclusion is permitted by law. Some states do not allow limitations on how long an implied warranty lasts, and some states do not allow the exclusion limitation of consequential damages to the above limitation and exclusion may not apply to you. This warranty gives you specific legal rights and you may also have other rights which vary from state to state.

It is your responsibility to follow the maintenance instructions described in the owner's manual. Routine service (cleaning, blade sharpening) is your responsibility.

McLane Manufacturing, Inc.

**Note:** Operator abuse and improper assembly of product is not covered by any written or implied warranty. Read your owner's manual carefully.